

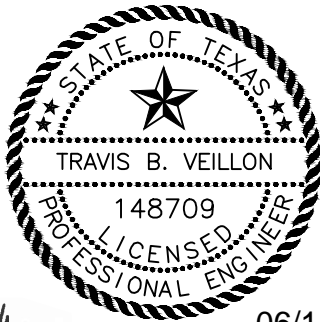
BID TABULATION FOR:

CONSTRUCTION OF WATER, SANITARY SEWER AND DRAINAGE FACILITIES & PAVING AND APPURTENANCES  
TO SERVE HARVEST GREEN SECTION 54  
FORT BEND COUNTY MUNICIPAL UTILITY DISTRICT NO. 134F  
FORT BEND COUNTY, TEXAS  
JUNE 11, 2024  
LJA ENGINEERING, INC.  
E. MURPHY  
JUNE 11, 2024  
2659-2154, 2659-2154C (9.2)

BID OPENING DATE:  
BID OPENING LOCATION:  
TABULATION BY:  
TABULATION DATE:  
LJA JOB NO.

BIDDER'S NAME	TOTAL AMOUNT BID	BID INCLUDING ALTERNATE ITEMS #1
1) HURTADO CONSTRUCTION COMPANY	\$938,176.32	\$1,550,841.00
2) CROSTEX CONSTRUCTION INC.	\$965,000.00	\$1,675,000.00
3) R CONSTRUCTION CIVIL, LLC	\$979,060.15	\$1,597,188.90
4) PRINCIPAL SERVICES, LTD	\$1,047,758.72	\$1,864,376.22
5) FELLERS AND CLARK LP	\$1,053,000.00	\$1,845,500.00
6) DIMAS BROS. CONSTRUCTION	\$1,108,677.80	\$1,925,138.80

CALENDAR DAYS 80/90



*Travis Veillon*

06/11/2024

I, Travis Veillon, PE, hereby certify these bid tabulations to be true and correct.

**BID TABULATION FOR:**

**BID OPENING DATE:**  
**BID OPENING LOCATION:**  
**TABULATION BY:**  
**TABULATION DATE:**  
**LJA JOB NO.**

CONSTRUCTION OF WATER, SANITARY SEWER AND DRAINAGE FACILITIES & PAVING AND APPURTENANCES  
 TO SERVE HARVEST GREEN SECTION 54  
 FORT BEND COUNTY MUNICIPAL UTILITY DISTRICT NO. 134F  
 FORT BEND COUNTY, TEXAS  
 JUNE 11, 2024  
 LJA ENGINEERING, INC.  
 E. MURPHY  
 JUNE 11, 2024  
 2659-2154, 2659-2154C (9.2)

ITEM	DESCRIPTION	UNIT	QTY	1) HURTADO CONSTRUCTION COMPANY		2) CROSTEX CONSTRUCTION INC.		3) R CONSTRUCTION CIVIL, LLC	
				UNIT COST	TOTAL COST	UNIT COST	TOTAL COST	UNIT COST	TOTAL COST
<b>WATER ITEMS – HARVEST GREEN SECTION 54</b>									
1	8" PVC WATER PIPE, C-900, DR 18, CLASS 235, ALL DEPTHS, INCLUDES ALL FITTINGS (TEES, BENDS, MIN. 20 GA COPPER TRACER WIRE, REDUCERS, THRUST BLOCKS AND CONNECTOR ETC.), BLUE IN COLOR, BEDDING AND BACKFILL, COMPLETE IN PLACE	LF	1146	\$38.00	\$43,548.00	\$37.00	\$42,402.00	\$38.00	\$43,548.00
2	8" PVC RESTRAINED JOINT WATER PIPE, C-900, DR 14, CLASS 305, ALL DEPTHS, INCLUDES ALL FITTINGS (TEES, BENDS, MIN. 20 GA COPPER TRACER WIRE, REDUCERS, THRUST BLOCKS AND CONNECTOR ETC.), BLUE IN COLOR, BEDDING AND BACKFILL, COMPLETE IN PLACE	LF	358	\$53.35	\$19,099.30	\$69.00	\$24,702.00	\$76.00	\$27,208.00
3	8" AWWA GATE VALVE AND BOX, ALL DEPTHS, COMPLETE IN PLACE	EA	4	\$1,518.00	\$6,072.00	\$1,800.00	\$7,200.00	\$2,150.00	\$8,600.00
4	12" PVC WATER PIPE, C-900, DR 18, CLASS 235, ALL DEPTHS, INCLUDES ALL FITTINGS (TEES, BENDS, MIN. 20 GA COPPER TRACER WIRE, REDUCERS, THRUST BLOCKS AND CONNECTOR ETC.), BLUE IN COLOR, BEDDING AND BACKFILL, COMPLETE IN PLACE	LF	807	\$63.00	\$50,841.00	\$66.00	\$53,262.00	\$64.00	\$51,648.00
5	12" PVC RESTRAINED JOINT WATER PIPE, C-900, DR 14, CLASS 305, ALL DEPTHS, INCLUDES ALL FITTINGS (TEES, BENDS, MIN. 20 GA COPPER TRACER WIRE, REDUCERS, THRUST BLOCKS AND CONNECTOR ETC.), BLUE IN COLOR, BEDDING AND BACKFILL, COMPLETE IN PLACE	LF	154	\$108.00	\$16,632.00	\$159.00	\$24,486.00	\$145.00	\$22,330.00
6	12" AWWA GATE VALVE AND BOX, ALL DEPTHS, COMPLETE IN PLACE	EA	2	\$3,098.00	\$6,196.00	\$3,400.00	\$6,800.00	\$3,900.00	\$7,800.00
7	FLUSHING VALVE UNIT, ALL DEPTHS, INCLUDES APPROPRIATE TEE AND RESTRAINED JOINT FITTINGS, 6" VALVE & BOX, 6" LEAD AND FIRE HYDRANT, THRUST BLOCKS, BLIND FLANGES, AND ADJUSTMENTS AS NECESSARY, COMPLETE IN PLACE	EA	5	\$5,918.00	\$29,590.00	\$6,000.00	\$30,000.00	\$6,350.00	\$31,750.00
8	PLUG AND CLAMP WITH 2" BLOW-OFF VALVE AND BOX, ALL SIZES AND DEPTH, COMPLETE IN PLACE	EA	2	\$1,100.00	\$2,200.00	\$1,625.00	\$3,250.00	\$1,850.00	\$3,700.00
9	12"x12" TAP SLEEVE & VALVE, COMPLETE IN PLACE	EA	1	\$8,200.00	\$8,200.00	\$11,000.00	\$11,000.00	\$9,200.00	\$9,200.00
10	TRENCH SAFETY SYSTEM, ALL DEPTHS, ALL SIZES, COMPLETE IN PLACE	LF	2465	\$0.08	\$197.20	\$0.05	\$123.25	\$0.10	\$246.50
<b>WATER ITEMS – HARVEST GREEN SECTION 54 SUBTOTAL:</b>					<b>\$182,575.50</b>		<b>\$203,225.25</b>		<b>\$206,030.50</b>
<b>SANITARY SEWER ITEMS – HARVEST GREEN SECTION 54</b>									
1	8" PVC SEWER PIPE, ASTM D-2241, SDR 26, PR 160, 0' - 8' CUT, GREEN IN COLOR, INCLUDES BEDDING AND BACKFILL, COMPLETE IN PLACE	LF	1862	\$48.00	\$89,376.00	\$38.00	\$70,756.00	\$40.00	\$74,480.00
2	8" PVC SEWER PIPE, ASTM D-2241, SDR 26 PR 160, 8' - 12' CUT, GREEN IN COLOR, INCLUDES BEDDING AND BACKFILL, COMPLETE IN PLACE	LF	132	\$55.00	\$7,260.00	\$42.00	\$5,544.00	\$42.00	\$5,544.00
3	PRECAST STANDARD SANITARY SEWER MANHOLE FOR 6" – 24" SANITARY SEWER PIPES, INCLUDES INFLOW PROTECTOR, INCLUDES ADJUSTMENTS, COMPLETE IN PLACE	EA	16	\$2,508.00	\$40,128.00	\$3,100.00	\$49,600.00	\$2,800.00	\$44,800.00
4	EXTRA DEPTH FOR SANITARY SEWER MANHOLE, (GREATER THAN 8' DEPTH), COMPLETE IN PLACE	VF	3.17	\$138.00	\$437.46	\$310.00	\$982.70	\$195.00	\$618.15
5	"LONG SIDE" DOUBLE OR SINGLE 6" PVC PIPE SERVICE LEADS, ASTM D-2241, SDR 26, ALL DEPTHS, INCLUDING PIPE, CEMENT STABILIZED SAND BACKFILL, STACK AND RISER AS NECESSARY, WYE, PLUG, MARKER, AND ANY NECESSARY FITTINGS, ETC., GREEN IN COLOR, COMPLETE IN PLACE	LF	752	\$63.00	\$47,376.00	\$48.00	\$36,096.00	\$48.00	\$36,096.00
6	"SHORT SIDE" DOUBLE OR SINGLE 6" PVC PIPE SERVICE LEADS, ASTM D-2241, SDR 26, ALL DEPTHS, INCLUDING PIPE, CEMENT STABILIZED SAND BACKFILL, STACK AND RISER AS NECESSARY, WYE, PLUG, MARKER, AND ANY NECESSARY FITTINGS, GREEN IN COLOR, COMPLETE IN PLACE	EA	10	\$1,528.00	\$15,280.00	\$1,700.00	\$17,000.00	\$1,500.00	\$15,000.00

**BID TABULATION FOR:**

**BID OPENING DATE:**  
**BID OPENING LOCATION:**  
**TABULATION BY:**  
**TABULATION DATE:**  
**LJA JOB NO.**

CONSTRUCTION OF WATER, SANITARY SEWER AND DRAINAGE FACILITIES & PAVING AND APPURTENANCES  
 TO SERVE HARVEST GREEN SECTION 54  
 FORT BEND COUNTY MUNICIPAL UTILITY DISTRICT NO. 134F  
 FORT BEND COUNTY, TEXAS  
 JUNE 11, 2024  
 LJA ENGINEERING, INC.  
 E. MURPHY  
 JUNE 11, 2024  
 2659-2154, 2659-2154C (9.2)

ITEM	DESCRIPTION	UNIT	QTY	1) HURTADO CONSTRUCTION COMPANY		2) CROSTEX CONSTRUCTION INC.		3) R CONSTRUCTION CIVIL, LLC	
				UNIT COST	TOTAL COST	UNIT COST	TOTAL COST	UNIT COST	TOTAL COST
7	REMOVE EXISTING SANITARY SEWER PLUG AND CONNECT PROPOSED SANITARY SEWER TO EXISTING SANITARY SEWER, INCLUDES DISPOSAL OF PLUG, ALL ADAPTORS AND CONNECTORS, ALL DEPTHS AND ALL SIZES, COMPLETE IN PLACE	EA	1	\$8.00	\$8.00	\$250.00	\$250.00	\$150.00	\$150.00
8	TRENCH SAFETY SYSTEM, ALL DEPTHS, ALL SIZES, COMPLETE IN PLACE	LF	2924	\$0.08	\$233.92	\$0.10	\$292.40	\$0.10	\$292.40
9	POST CONSTRUCTION CLEANING AND VIDEO TAPING OF SANITARY SEWER LINE TO BE PROVIDED TO ENGINEER FOR ACCEPTANCE, COMPLETE IN PLACE	LF	1972	\$0.02	\$39.44	\$3.50	\$6,902.00	\$2.00	\$3,944.00
<b>SANITARY SEWER ITEMS – HARVEST GREEN SECTION 54 SUBTOTAL:</b>					<b>\$200,138.82</b>	<b>\$187,423.10</b>		<b>\$180,924.55</b>	
<b>DRAINAGE FACILITIES ITEMS – HARVEST GREEN SECTION 54</b>									
1	24" RCP, STORM SEWER, ASTM C-76, CLASS III, ALL CUTS, INCLUDES BEDDING AND BACKFILL, COMPLETE IN PLACE	LF	1502	\$90.00	\$135,180.00	\$81.00	\$121,662.00	\$90.00	\$135,180.00
2	30" RCP, STORM SEWER, ASTM C-76, CLASS III, ALL CUTS, INCLUDES BEDDING AND BACKFILL, COMPLETE IN PLACE	LF	364	\$128.00	\$46,592.00	\$102.00	\$37,128.00	\$125.00	\$45,500.00
3	36" RCP, STORM SEWER, ASTM C-76, CLASS III, ALL CUTS, INCLUDE BEDDING AND BACKFILL, COMPLETE IN PLACE	LF	134	\$148.00	\$19,832.00	\$140.00	\$18,760.00	\$220.00	\$29,480.00
4	42" RCP, STORM SEWER, ASTM C-76, CLASS III, ALL CUTS, INCLUDES BEDDING AND BACKFILL, COMPLETE IN PLACE	LF	136	\$245.00	\$33,320.00	\$184.00	\$25,024.00	\$230.00	\$31,280.00
5	48" RCP, STORM SEWER, ASTM C-76, CLASS III, ALL CUTS, INCLUDES BEDDING AND BACKFILL, COMPLETE IN PLACE	LF	60	\$268.00	\$16,080.00	\$221.00	\$13,260.00	\$245.00	\$14,700.00
6	REINFORCED CONCRETE PRECAST OR REINFORCED CONCRETE CAST-IN-PLACE TYPE "C" MANHOLE FOR 42" STORM SEWER AND SMALLER, ALL DEPTHS, INCLUDES ADJUSTMENTS, COMPLETE IN PLACE	EA	12	\$2,178.00	\$26,136.00	\$3,600.00	\$43,200.00	\$3,700.00	\$44,400.00
7	STAGE I – REINFORCED CONCRETE PRECAST INLET, (TYPE "C"), ALL DEPTHS, COMPLETE IN PLACE	EA	16	\$1,078.00	\$17,248.00	\$3,000.00	\$48,000.00	\$1,300.00	\$20,800.00
8	STAGE II – REINFORCED CONCRETE PRECAST INLET, (TYPE "C"), ALL DEPTHS, COMPLETE IN PLACE	EA	16	\$1,518.00	\$24,288.00	\$800.00	\$12,800.00	\$2,600.00	\$41,600.00
9	STAGE I – REINFORCED CONCRETE PRECAST INLET, (TYPE "C-1"), 10' OPENING, COMPLETE IN PLACE	EA	3	\$2,280.00	\$6,840.00	\$3,000.00	\$9,000.00	\$1,900.00	\$5,700.00
10	STAGE II – REINFORCED CONCRETE PRECAST INLET, (TYPE "C-1"), 10' OPENING, COMPLETE IN PLACE	EA	3	\$2,574.00	\$7,722.00	\$1,100.00	\$3,300.00	\$3,000.00	\$9,000.00
11	4" REINFORCED CONCRETE SLOPE PAVING, INCLUDES 2 FOOT TOE WALL ON ALL SIDES, COMPLETE IN PLACE	SY	348	\$98.00	\$34,104.00	\$125.00	\$43,500.00	\$110.00	\$38,280.00
12	18" THICK RIP RAP GRADATION NO. 2, INCLUDES GEOTEXTILE FABRIC OF MIRAFI-600 OR APPROVED EQUAL, COMPLETE IN PLACE	SY	214	\$102.00	\$21,828.00	\$110.00	\$23,540.00	\$125.00	\$26,750.00
13	INSTALLATION OF GREEN ARMOR 7010 ON OUTFALL SWALE, AS SHOWN ON PLAN & PROFILES, INCLUDES STRIPPING AREA OF WEEDS AND VEGETATION, COMPLETE IN PLACE	SY	1036	\$21.85	\$22,636.60	\$27.00	\$27,972.00	\$16.00	\$16,576.00
14	EXCAVATION OF 5' FLAT BOTTOM SWALES WITH 4:1 SIDE SLOPES WITH VARYING DEPTH, INCLUDES STRIPPINGS, STOCKPILE OF STRIPPINGS, REAPPLYING OF STRIPPINGS TO FINAL GRADED AREAS, INCLUDES HAULING AND COMPACTING TO 95% PROCTOR DENSITY OF SPOILS ON-SITE TO FINAL GRADED AREA, COMPLETE IN PLACE	LF	291	\$2.48	\$721.68	\$16.00	\$4,656.00	\$4.50	\$1,309.50
15	36" FLAP GATE, COMPLETE IN PLACE	EA	2	\$14,500.00	\$29,000.00	\$8,000.00	\$16,000.00	\$6,900.00	\$13,800.00

**BID TABULATION FOR:**

**BID OPENING DATE:**  
**BID OPENING LOCATION:**  
**TABULATION BY:**  
**TABULATION DATE:**  
**LJA JOB NO.**

CONSTRUCTION OF WATER, SANITARY SEWER AND DRAINAGE FACILITIES & PAVING AND APPURTENANCES  
 TO SERVE HARVEST GREEN SECTION 54  
 FORT BEND COUNTY MUNICIPAL UTILITY DISTRICT NO. 134F  
 FORT BEND COUNTY, TEXAS  
 JUNE 11, 2024  
 LJA ENGINEERING, INC.  
 E. MURPHY  
 JUNE 11, 2024  
 2659-2154, 2659-2154C (9.2)

ITEM	DESCRIPTION	UNIT	QTY	1) HURTADO CONSTRUCTION COMPANY		2) CROSTEX CONSTRUCTION INC.		3) R CONSTRUCTION CIVIL, LLC	
				UNIT COST	TOTAL COST	UNIT COST	TOTAL COST	UNIT COST	TOTAL COST
16	48" FLAP GATE, COMPLETE IN PLACE	EA	1	\$18,000.00	\$18,000.00	\$11,000.00	\$11,000.00	\$9,700.00	\$9,700.00
17	TRENCH SAFETY SYSTEM, ALL DEPTHS, ALL SIZES, COMPLETE IN PLACE	LF	2196	\$0.18	\$395.28	\$0.05	\$109.80	\$0.10	\$219.60
<b>DRAINAGE FACILITIES ITEMS – HARVEST GREEN SECTION 54 SUBTOTAL:</b>					<b>\$459,923.56</b>		<b>\$458,911.80</b>		<b>\$484,275.10</b>
<b>MISCELLANEOUS ITEMS – HARVEST GREEN SECTION 54</b>									
1	CEMENT STABILIZED SAND, 1.5 SACKS OF CEMENT PER CUBIC YARD OF MIX, (TO BE USED ONLY AT THE WRITTEN DIRECTION OF THE ENGINEER), ALL DEPTHS, COMPLETE IN PLACE	TON	1	\$1.00	\$1.00	\$40.00	\$40.00	\$30.00	\$30.00
2	ADDITIONAL DUCTILE IRON FITTINGS, (TO BE USED ONLY AT THE WRITTEN DIRECTION OF THE ENGINEER), COMPLETE IN PLACE	TON	2	\$1.00	\$2.00	\$2,500.00	\$5,000.00	\$2,000.00	\$4,000.00
3	STAGE I INLET PROTECTION BARRIERS, COMPLETE IN PLACE	EA	19	\$80.00	\$1,520.00	\$100.00	\$1,900.00	\$50.00	\$950.00
4	STAGE II INLET PROTECTION BARRIERS AS DIRECTED BY ENGINEER, COMPLETE IN PLACE	EA	21	\$0.02	\$0.42	\$30.00	\$630.00	\$50.00	\$1,050.00
5	CONSTRUCT AND MAINTAIN STABILIZED CONSTRUCTION EXIT, COMPLETE IN PLACE	EA	1	\$800.00	\$800.00	\$2,000.00	\$2,000.00	\$1,500.00	\$1,500.00
6	UTILITY SPOILS FROM SECTION 54 TO BE USED ON-SITE, INCLUDES HAULING, PLACEMENT AND COMPACTION TO 95% STANDARD PROCTOR DENSITY, COMPLETE IN PLACE	LS	1	\$8.00	\$8.00	\$5,500.00	\$5,500.00	\$500.00	\$500.00
7	ADDITIONAL COST TO HAUL UTILITY SPOILS FROM SECTION 54 OFF-SITE BUT WITHIN DEVELOPMENT, NO MORE THAN 3,500 FT (TO BE USED ONLY AT THE WRITTEN DIRECTION OF THE ENGINEER), INCLUDES STRIPPING, STOCK PILING OF STRIPPINGS, EMBANKMENT, AND REAPPLYING OF STRIPPINGS TO FINAL GRADED AREA, COMPLETE IN PLACE	CY	1000	\$0.01	\$10.00	\$6.00	\$6,000.00	\$3.50	\$3,500.00
8	SURFACE WATER CONTROL, INCLUDES PUMPING REQUIRED TO CONSTRUCT PROPOSED PROJECT, (TO BE USED ONLY AT THE WRITTEN DIRECTION OF THE ENGINEER), COMPLETE IN PLACE	LS	1	\$0.02	\$0.02	\$2,000.00	\$2,000.00	\$4,500.00	\$4,500.00
9	DEWATERING INCLUDES CONVENTIONAL VACUUM TYPE WELL POINTS, INTERNAL SUMPS AND PUMPS, OR ANY TYPE OF PUMPING AS NECESSARY TO COMPLETE THE CONSTRUCTION OF THE PROJECT, (TO BE USED ONLY AT THE WRITTEN DIRECTION OF THE ENGINEER), COMPLETE IN PLACE	LF	1972	\$20.00	\$39,440.00	\$20.00	\$39,440.00	\$20.00	\$39,440.00
10	ADDITIONAL COST FOR BEDDING AND BACKFILL FOR UNSATISFACTORY SOIL CONDITIONS (WET SAND), (TO BE USED ONLY AT THE WRITTEN DIRECTION OF THE ENGINEER), COMPLETE IN PLACE	LF	1972	\$20.00	\$39,440.00	\$20.00	\$39,440.00	\$20.00	\$39,440.00
11	FORT BEND COUNTY ONE-YEAR SUBDIVISION BOND FOR HARVEST GREEN SECTION 54 IN THE TOTAL AMOUNT OF THE BOND OF \$164,864.00, COMPLETE IN PLACE	LS	1	\$3,797.00	\$3,797.00	\$1,800.00	\$1,800.00	\$2,700.00	\$2,700.00
12	CONSTRUCTION STAKING FOR HARVEST GREEN SECTION 54 FOR WS&D CONSTRUCTION BY THE CONTRACTOR PER KYLE KACAL, GBI SURVEYING, CONTACT 281-499-4539 FOR PRICING, COMPLETE IN PLACE	LS	1	\$9,720.00	\$9,720.00	\$10,939.85	\$10,939.85	\$9,720.00	\$9,720.00
13	CONCRETE TRUCK WASHOUT, COMPLETE IN PLACE	EA	1	\$800.00	\$800.00	\$750.00	\$750.00	\$500.00	\$500.00
<b>MISCELLANEOUS ITEMS – HARVEST GREEN SECTION 54 SUBTOTAL:</b>					<b>\$95,538.44</b>		<b>\$115,439.85</b>		<b>\$107,830.00</b>
<b>ALTERNATE ITEMS #1</b>									
1	6-INCH REINFORCED CONCRETE PAVEMENT (3,500 PSI / 5.5 SACK CEMENT PER CUBIC YARD), COMPLETE IN PLACE	SY	8089	\$51.88	\$419,657.32	\$54.60	\$441,659.40	\$51.00	\$412,539.00
2	4-INCH X 12-INCH REINFORCED CONCRETE CURB (3,500 PSI), COMPLETE IN PLACE	LF	3453	\$3.88	\$13,397.64	\$4.00	\$13,812.00	\$3.75	\$12,948.75

**BID TABULATION FOR:**

**BID OPENING DATE:**  
**BID OPENING LOCATION:**  
**TABULATION BY:**  
**TABULATION DATE:**  
**LJA JOB NO.**

CONSTRUCTION OF WATER, SANITARY SEWER AND DRAINAGE FACILITIES & PAVING AND APPURTENANCES  
 TO SERVE HARVEST GREEN SECTION 54  
 FORT BEND COUNTY MUNICIPAL UTILITY DISTRICT NO. 134F  
 FORT BEND COUNTY, TEXAS  
 JUNE 11, 2024  
 LJA ENGINEERING, INC.  
 E. MURPHY  
 JUNE 11, 2024  
 2659-2154, 2659-2154C (9.2)

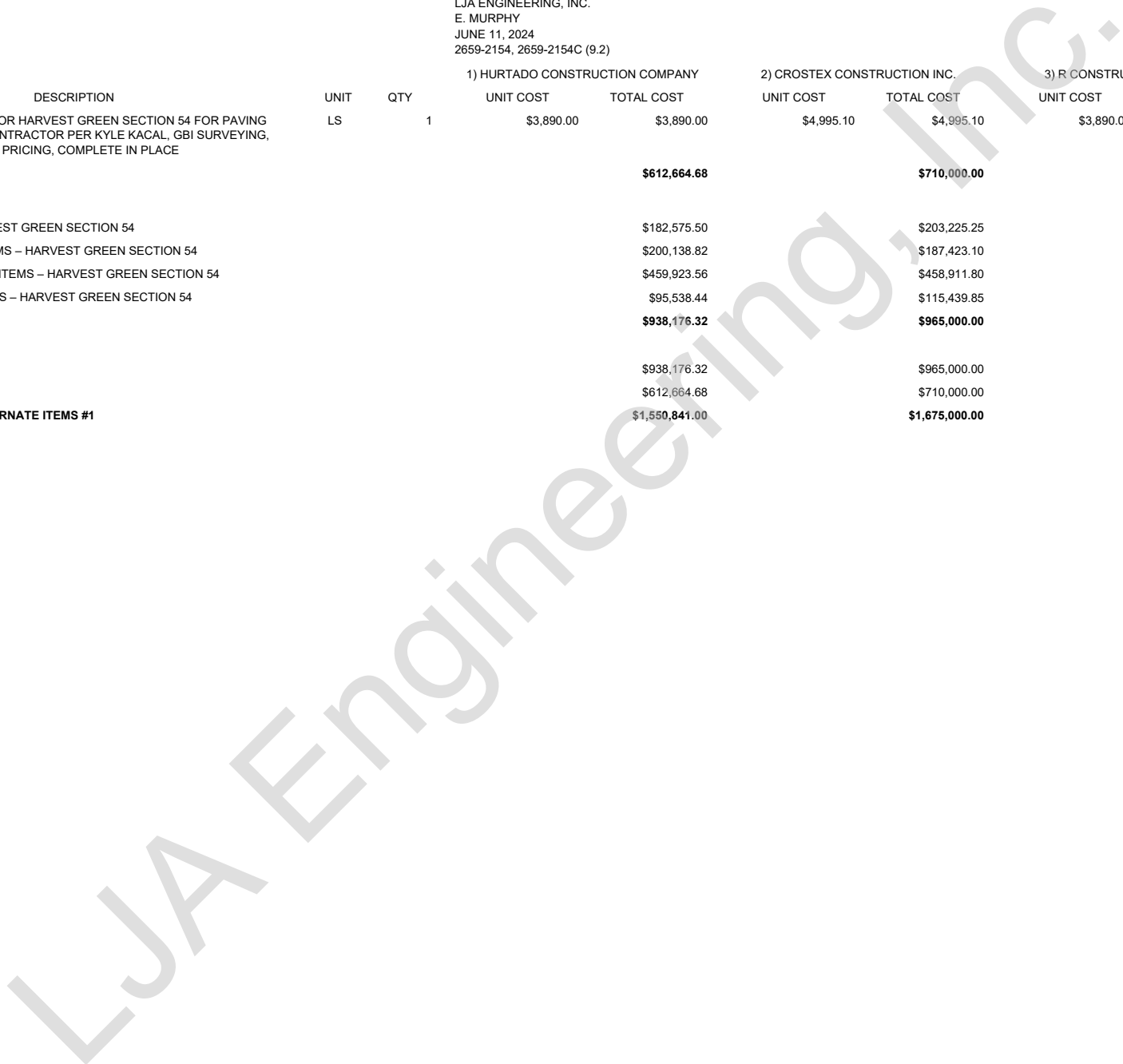
ITEM	DESCRIPTION	UNIT	QTY	1) HURTADO CONSTRUCTION COMPANY		2) CROSTEX CONSTRUCTION INC.		3) R CONSTRUCTION CIVIL, LLC	
				UNIT COST	TOTAL COST	UNIT COST	TOTAL COST	UNIT COST	TOTAL COST
3	6-INCH REINFORCED CONCRETE CURB (3,500 PSI), COMPLETE IN PLACE	LF	1443	\$3.88	\$5,598.84	\$4.00	\$5,772.00	\$3.75	\$5,411.25
4	8-INCH LIME STABILIZED SUBGRADE FOR 6-INCH PAVEMENT (MANIPULATION), COMPLETE IN PLACE	SY	9173	\$2.98	\$27,335.54	\$7.50	\$68,797.50	\$3.75	\$34,398.75
5	3% HYDRATED LIME FOR SUBGRADE, (BY DRY UNIT WEIGHT) AS REQUIRED BY SOIL CONDITIONS AND APPROVED BY GEOTECHNICAL ENGINEER, COMPLETE IN PLACE	TON	91	\$358.00	\$32,578.00	\$386.00	\$35,126.00	\$328.00	\$29,848.00
6	7% FLY ASH FOR SUBGRADE, (BY DRY UNIT WEIGHT) AS REQUIRED BY SOIL CONDITIONS AND APPROVED BY GEOTECHNICAL ENGINEER, COMPLETE IN PLACE	TON	212	\$155.00	\$32,860.00	\$188.00	\$39,856.00	\$140.00	\$29,680.00
7	FINAL LOT AND RESERVE GRADING, COMPLETE IN PLACE	LS	1	\$13,000.00	\$13,000.00	\$5,350.00	\$5,350.00	\$7,900.00	\$7,900.00
8	ROADWAY, LOT AND RESERVE EMBANKMENT INCLUDES STRIPPINGS, STOCKPILING OF STRIPPINGS, COMPACTION TO 95% STANDARD PROCTOR DENSITY, RE-APPLICATION OF STRIPPINGS, COMPLETE IN PLACE	CY	3710	\$1.48	\$5,490.80	\$2.15	\$7,976.50	\$2.00	\$7,420.00
9	ROADWAY, LOT AND RESERVE EXCAVATION, INCLUDES STRIPPINGS, STOCKPILING OF STRIPPINGS, AND RE-APPLICATION OF STRIPPINGS, TO APPLICABLE AREAS, COMPLETE IN PLACE	CY	3710	\$2.18	\$8,087.80	\$2.15	\$7,976.50	\$2.00	\$7,420.00
10	TYPE 7 ADA RAMPS, COMPLETE IN PLACE	EA	8	\$1,638.00	\$13,104.00	\$1,500.00	\$12,000.00	\$1,850.00	\$14,800.00
11	PERMANENT TRAFFIC CONTROL DEVICES, (INCLUDING ALL TRAFFIC BUTTONS, PERMANENT STRIPING AND PERMANENT SIGNAGE), COMPLETE IN PLACE	LS	1	\$9,656.68	\$9,656.68	\$12,520.00	\$12,520.00	\$9,600.00	\$9,600.00
12	TEMPORARY TRAFFIC CONTROL DEVICES (INCLUDING ALL TRAFFIC BUTTONS, PAVEMENT STRIPING, STREET SIGNS, AND TRAFFIC SIGNS), COMPLETE IN PLACE	LS	1	\$0.02	\$0.02	\$535.00	\$535.00	\$1,500.00	\$1,500.00
13	DOUBLE REFLECTORIZED BLUE BUTTONS FOR FIRE HYDRANTS, COMPLETE IN PLACE	EA	5	\$18.00	\$90.00	\$20.00	\$100.00	\$15.00	\$75.00
14	6-INCH SCHEDULED 40 PVC IRRIGATION SLEEVES (HORIZONTAL SLEEVE ONLY), NO SEPARATE PAY FOR VERTICAL SLEEVE, COMPLETE IN PLACE	LF	87	\$32.00	\$2,784.00	\$38.00	\$3,306.00	\$31.00	\$2,697.00
15	REMOVAL AND DISPOSAL OF TYPE III BARRICADE WITH LOAD TRANSFER DEVICE, COMPLETE IN PLACE	EA	1	\$0.02	\$0.02	\$215.00	\$215.00	\$1.00	\$1.00
16	CONNECTION TO EXISTING 6-INCH CONCRETE PAVEMENT, COMPLETE IN PLACE	EA	1	\$1,500.00	\$1,500.00	\$803.00	\$803.00	\$2,300.00	\$2,300.00
17	REMOVE AND REPLACE EXISTING TYPE 7 ADA RAMP, COMPLETE IN PLACE	EA	1	\$0.02	\$0.02	\$2,150.00	\$2,150.00	\$3,300.00	\$3,300.00
18	STORM WATER POLLUTION PREVENTION PLAN COMPLIANCE AND INSPECTIONS, INCLUDING STREET SWEEPING, COMPLETE IN PLACE	LS	1	\$800.00	\$800.00	\$4,500.00	\$4,500.00	\$1,200.00	\$1,200.00
19	CONCRETE TRUCK WASHOUT, COMPLETE IN PLACE	EA	1	\$800.00	\$800.00	\$1,300.00	\$1,300.00	\$500.00	\$500.00
20	REINFORCED FILTER FABRIC FENCE, COMPLETE IN PLACE	LF	100	\$1.00	\$100.00	\$3.00	\$300.00	\$2.00	\$200.00
21	HYDROMULCH SEEDING OF SWALES, INCLUDES WATERING, COMPLETE IN PLACE	AC	3	\$200.00	\$600.00	\$2,000.00	\$6,000.00	\$1,500.00	\$4,500.00
22	BROADCAST SEEDING OF LOTS AND RESERVES IN SECTION 54, INCLUDES WATERING AND FERTILIZING, COMPLETE IN PLACE	AC	14	\$1.00	\$14.00	\$500.00	\$7,000.00	\$650.00	\$9,100.00
23	HAUL FROM ON-SITE STOCKPILE AND EMBANKMENT OF LOTS WITHIN SECTION 54, INCLUDES ON-SITE HAULING, EMBANKMENT, COMPACTION TO 95% STANDARD PROCTOR DENSITY, COMPLETE IN PLACE	CY	6500	\$3.28	\$21,320.00	\$4.30	\$27,950.00	\$2.60	\$16,900.00

**BID TABULATION FOR:**

**BID OPENING DATE:**  
**BID OPENING LOCATION:**  
**TABULATION BY:**  
**TABULATION DATE:**  
**LJA JOB NO.**

CONSTRUCTION OF WATER, SANITARY SEWER AND DRAINAGE FACILITIES & PAVING AND APPURTENANCES  
 TO SERVE HARVEST GREEN SECTION 54  
 FORT BEND COUNTY MUNICIPAL UTILITY DISTRICT NO. 134F  
 FORT BEND COUNTY, TEXAS  
 JUNE 11, 2024  
 LJA ENGINEERING, INC.  
 E. MURPHY  
 JUNE 11, 2024  
 2659-2154, 2659-2154C (9.2)

ITEM	DESCRIPTION	UNIT	QTY	1) HURTADO CONSTRUCTION COMPANY		2) CROSTEX CONSTRUCTION INC.		3) R CONSTRUCTION CIVIL, LLC	
				UNIT COST	TOTAL COST	UNIT COST	TOTAL COST	UNIT COST	TOTAL COST
24	CONSTRUCTION STAKING FOR HARVEST GREEN SECTION 54 FOR PAVING CONSTRUCTION BY THE CONTRACTOR PER KYLE KACAL, GBI SURVEYING, CONTACT 281-499-4539 FOR PRICING, COMPLETE IN PLACE	LS	1	\$3,890.00	\$3,890.00	\$4,995.10	\$4,995.10	\$3,890.00	\$3,890.00
<b>ALTERNATE ITEMS #1 SUBTOTAL:</b>					<b>\$612,664.68</b>	<b>\$710,000.00</b>	<b>\$618,128.75</b>		
<b><u>BIDDING SUMMARY</u></b>									
SUBTOTAL WATER ITEMS – HARVEST GREEN SECTION 54					\$182,575.50	\$203,225.25	\$206,030.50		
SUBTOTAL SANITARY SEWER ITEMS – HARVEST GREEN SECTION 54					\$200,138.82	\$187,423.10	\$180,924.55		
SUBTOTAL DRAINAGE FACILITIES ITEMS – HARVEST GREEN SECTION 54					\$459,923.56	\$458,911.80	\$484,275.10		
SUBTOTAL MISCELLANEOUS ITEMS – HARVEST GREEN SECTION 54					\$95,538.44	\$115,439.85	\$107,830.00		
<b>TOTAL AMOUNT BASE BID</b>					<b>\$938,176.32</b>	<b>\$965,000.00</b>	<b>\$979,060.15</b>		
<b><u>ALTERNATE ITEMS #1</u></b>									
TOTAL AMOUNT BASE BID					\$938,176.32	\$965,000.00	\$979,060.15		
SUBTOTAL ALTERNATE ITEMS #1					\$612,664.68	\$710,000.00	\$618,128.75		
<b>TOTAL AMOUNT INCLUDING ALTERNATE ITEMS #1</b>					<b>\$1,550,841.00</b>	<b>\$1,675,000.00</b>	<b>\$1,597,188.90</b>		



**BID TABULATION FOR:**

CONSTRUCTION OF WATER, SANITARY SEWER AND DRAINAGE FACILITIES & PAVING AND APPURTENANCES  
 TO SERVE HARVEST GREEN SECTION 54  
 FORT BEND COUNTY MUNICIPAL UTILITY DISTRICT NO. 134F  
 FORT BEND COUNTY, TEXAS  
 JUNE 11, 2024  
 LJA ENGINEERING, INC.  
 E. MURPHY  
 JUNE 11, 2024  
 2659-2154, 2659-2154C (9.2)

**BID OPENING DATE:**  
**BID OPENING LOCATION:**  
**TABULATION BY:**  
**TABULATION DATE:**  
**LJA JOB NO.**

ITEM	DESCRIPTION	UNIT	QTY	4) PRINCIPAL SERVICES, LTD		5) FELLERS AND CLARK LP		6) DIMAS BROS. CONSTRUCTION	
				UNIT COST	TOTAL COST	UNIT COST	TOTAL COST	UNIT COST	TOTAL COST
<b>WATER ITEMS – HARVEST GREEN SECTION 54</b>									
1	8" PVC WATER PIPE, C-900, DR 18, CLASS 235, ALL DEPTHS, INCLUDES ALL FITTINGS (TEES, BENDS, MIN. 20 GA COPPER TRACER WIRE, REDUCERS, THRUST BLOCKS AND CONNECTORETC.), BLUE IN COLOR, BEDDING AND BACKFILL, COMPLETE IN PLACE	LF	1146	\$42.00	\$48,132.00	\$50.70	\$58,102.20	\$66.00	\$75,636.00
2	8" PVC RESTRAINED JOINT WATER PIPE, C-900, DR 14, CLASS 305, ALL DEPTHS, INCLUDES ALL FITTINGS (TEES, BENDS, MIN. 20 GA COPPER TRACER WIRE, REDUCERS, THRUST BLOCKS AND CONNECTOR ETC.), BLUE IN COLOR, BEDDING AND BACKFILL, COMPLETE IN PLACE	LF	358	\$80.00	\$28,640.00	\$52.85	\$18,920.30	\$75.00	\$26,850.00
3	8" AWWA GATE VALVE AND BOX, ALL DEPTHS, COMPLETE IN PLACE	EA	4	\$1,999.00	\$7,996.00	\$2,097.90	\$8,391.60	\$2,000.00	\$8,000.00
4	12" PVC WATER PIPE, C-900, DR 18, CLASS 235, ALL DEPTHS, INCLUDES ALL FITTINGS (TEES, BENDS, MIN. 20 GA COPPER TRACER WIRE, REDUCERS, THRUST BLOCKS AND CONNECTORETC.), BLUE IN COLOR, BEDDING AND BACKFILL, COMPLETE IN PLACE	LF	807	\$69.00	\$55,683.00	\$85.90	\$69,321.30	\$75.00	\$60,525.00
5	12" PVC RESTRAINED JOINT WATER PIPE, C-900, DR 14, CLASS 305, ALL DEPTHS, INCLUDES ALL FITTINGS (TEES, BENDS, MIN. 20 GA COPPER TRACER WIRE, REDUCERS, THRUST BLOCKS AND CONNECTOR ETC.), BLUE IN COLOR, BEDDING AND BACKFILL, COMPLETE IN PLACE	LF	154	\$185.00	\$28,490.00	\$97.35	\$14,991.90	\$90.00	\$13,860.00
6	12" AWWA GATE VALVE AND BOX, ALL DEPTHS, COMPLETE IN PLACE	EA	2	\$3,897.00	\$7,794.00	\$4,198.35	\$8,396.70	\$3,000.00	\$6,000.00
7	FLUSHING VALVE UNIT, ALL DEPTHS, INCLUDES APPROPRIATE TEE AND RESTRAINED JOINT FITTINGS, 6" VALVE & BOX, 6" LEAD AND FIRE HYDRANT, THRUST BLOCKS, BLIND FLANGES, AND ADJUSTMENTS AS NECESSARY, COMPLETE IN PLACE	EA	5	\$6,734.00	\$33,670.00	\$5,702.60	\$28,513.00	\$8,000.00	\$40,000.00
8	PLUG AND CLAMP WITH 2" BLOW-OFF VALVE AND BOX, ALL SIZES AND DEPTH, COMPLETE IN PLACE	EA	2	\$1,896.00	\$3,792.00	\$626.25	\$1,252.50	\$100.00	\$200.00
9	12"x12" TAP SLEEVE & VALVE, COMPLETE IN PLACE	EA	1	\$10,985.00	\$10,985.00	\$9,456.30	\$9,456.30	\$10,000.00	\$10,000.00
10	TRENCH SAFETY SYSTEM, ALL DEPTHS, ALL SIZES, COMPLETE IN PLACE	LF	2465	\$0.10	\$246.50	\$0.15	\$369.75	\$1.00	\$2,465.00
<b>WATER ITEMS – HARVEST GREEN SECTION 54 SUBTOTAL:</b>					<b>\$225,428.50</b>		<b>\$217,715.55</b>		<b>\$243,536.00</b>
<b>SANITARY SEWER ITEMS – HARVEST GREEN SECTION 54</b>									
1	8" PVC SEWER PIPE, ASTM D-2241, SDR 26, PR 160, 0' - 8' CUT, GREEN IN COLOR, INCLUDES BEDDING AND BACKFILL, COMPLETE IN PLACE	LF	1862	\$42.00	\$78,204.00	\$40.15	\$74,759.30	\$55.00	\$102,410.00
2	8" PVC SEWER PIPE, ASTM D-2241, SDR 26 PR 160, 8' - 12' CUT, GREEN IN COLOR, INCLUDES BEDDING AND BACKFILL, COMPLETE IN PLACE	LF	132	\$43.00	\$5,676.00	\$40.15	\$5,299.80	\$58.00	\$7,656.00
3	PRECAST STANDARD SANITARY SEWER MANHOLE FOR 6" – 24" SANITARY SEWER PIPES, INCLUDES INFLOW PROTECTOR, INCLUDES ADJUSTMENTS, COMPLETE IN PLACE	EA	16	\$4,496.00	\$71,936.00	\$2,755.50	\$44,088.00	\$3,884.00	\$62,144.00
4	EXTRA DEPTH FOR SANITARY SEWER MANHOLE, (GREATER THAN 8' DEPTH), COMPLETE IN PLACE	VF	3.17	\$206.00	\$653.02	\$144.05	\$456.64	\$140.00	\$443.80
5	"LONG SIDE" DOUBLE OR SINGLE 6" PVC PIPE SERVICE LEADS, ASTM D-2241, SDR 26, ALL DEPTHS, INCLUDING PIPE, CEMENT STABILIZED SAND BACKFILL, STACK AND RISER AS NECESSARY, WYE, PLUG, MARKER, AND ANY NECESSARY FITTINGS, ETC., GREEN IN COLOR, COMPLETE IN PLACE	LF	752	\$48.00	\$36,096.00	\$51.15	\$38,464.80	\$68.00	\$51,136.00
6	"SHORT SIDE" DOUBLE OR SINGLE 6" PVC PIPE SERVICE LEADS, ASTM D-2241, SDR 26, ALL DEPTHS, INCLUDING PIPE, CEMENT STABILIZED SAND BACKFILL, STACK AND RISER AS NECESSARY, WYE, PLUG, MARKER, AND ANY NECESSARY FITTINGS, GREEN IN COLOR, COMPLETE IN PLACE	EA	10	\$2,048.00	\$20,480.00	\$1,536.55	\$15,365.50	\$1,500.00	\$15,000.00

**BID TABULATION FOR:**

CONSTRUCTION OF WATER, SANITARY SEWER AND DRAINAGE FACILITIES & PAVING AND APPURTENANCES  
 TO SERVE HARVEST GREEN SECTION 54  
 FORT BEND COUNTY MUNICIPAL UTILITY DISTRICT NO. 134F  
 FORT BEND COUNTY, TEXAS  
 JUNE 11, 2024  
 LJA ENGINEERING, INC.  
 E. MURPHY  
 JUNE 11, 2024  
 2659-2154, 2659-2154C (9.2)

**BID OPENING DATE:**  
**BID OPENING LOCATION:**  
**TABULATION BY:**  
**TABULATION DATE:**  
**LJA JOB NO.**

ITEM	DESCRIPTION	UNIT	QTY	4) PRINCIPAL SERVICES, LTD		5) FELLERS AND CLARK LP		6) DIMAS BROS. CONSTRUCTION	
				UNIT COST	TOTAL COST	UNIT COST	TOTAL COST	UNIT COST	TOTAL COST
7	REMOVE EXISTING SANITARY SEWER PLUG AND CONNECT PROPOSED SANITARY SEWER TO EXISTING SANITARY SEWER, INCLUDES DISPOSAL OF PLUG, ALL ADAPTORS AND CONNECTORS, ALL DEPTHS AND ALL SIZES, COMPLETE IN PLACE	EA	1	\$138.00	\$138.00	\$438.35	\$438.35	\$184.00	\$184.00
8	TRENCH SAFETY SYSTEM, ALL DEPTHS, ALL SIZES, COMPLETE IN PLACE	LF	2924	\$0.10	\$292.40	\$0.15	\$438.60	\$1.00	\$2,924.00
9	POST CONSTRUCTION CLEANING AND VIDEO TAPING OF SANITARY SEWER LINE TO BE PROVIDED TO ENGINEER FOR ACCEPTANCE, COMPLETE IN PLACE	LF	1972	\$0.10	\$197.20	\$3.15	\$6,211.80	\$2.00	\$3,944.00
<b>SANITARY SEWER ITEMS – HARVEST GREEN SECTION 54 SUBTOTAL:</b>					<b>\$213,672.62</b>		<b>\$185,522.79</b>		<b>\$245,841.80</b>
<b>DRAINAGE FACILITIES ITEMS – HARVEST GREEN SECTION 54</b>									
1	24" RCP, STORM SEWER, ASTM C-76, CLASS III, ALL CUTS, INCLUDES BEDDING AND BACKFILL, COMPLETE IN PLACE	LF	1502	\$104.00	\$156,208.00	\$101.60	\$152,603.20	\$105.00	\$157,710.00
2	30" RCP, STORM SEWER, ASTM C-76, CLASS III, ALL CUTS, INCLUDES BEDDING AND BACKFILL, COMPLETE IN PLACE	LF	364	\$130.00	\$47,320.00	\$124.45	\$45,299.80	\$125.00	\$45,500.00
3	36" RCP, STORM SEWER, ASTM C-76, CLASS III, ALL CUTS, INCLUDE BEDDING AND BACKFILL, COMPLETE IN PLACE	LF	134	\$185.00	\$24,790.00	\$165.95	\$22,237.30	\$165.00	\$22,110.00
4	42" RCP, STORM SEWER, ASTM C-76, CLASS III, ALL CUTS, INCLUDES BEDDING AND BACKFILL, COMPLETE IN PLACE	LF	136	\$246.00	\$33,456.00	\$213.75	\$29,070.00	\$195.00	\$26,520.00
5	48" RCP, STORM SEWER, ASTM C-76, CLASS III, ALL CUTS, INCLUDES BEDDING AND BACKFILL, COMPLETE IN PLACE	LF	60	\$287.00	\$17,220.00	\$251.10	\$15,066.00	\$250.00	\$15,000.00
6	REINFORCED CONCRETE PRECAST OR REINFORCED CONCRETE CAST-IN-PLACE TYPE "C" MANHOLE FOR 42" STORM SEWER AND SMALLER, ALL DEPTHS, INCLUDES ADJUSTMENTS, COMPLETE IN PLACE	EA	12	\$3,313.00	\$39,756.00	\$2,630.45	\$31,565.40	\$3,000.00	\$36,000.00
7	STAGE I – REINFORCED CONCRETE PRECAST INLET, (TYPE "C"), ALL DEPTHS, COMPLETE IN PLACE	EA	16	\$1,499.00	\$23,984.00	\$1,898.80	\$30,380.80	\$1,200.00	\$19,200.00
8	STAGE II – REINFORCED CONCRETE PRECAST INLET, (TYPE "C"), ALL DEPTHS, COMPLETE IN PLACE	EA	16	\$2,046.00	\$32,736.00	\$2,605.20	\$41,683.20	\$1,984.00	\$31,744.00
9	STAGE I – REINFORCED CONCRETE PRECAST INLET, (TYPE "C-1"), 10' OPENING, COMPLETE IN PLACE	EA	3	\$1,561.00	\$4,683.00	\$2,813.10	\$8,439.30	\$1,800.00	\$5,400.00
10	STAGE II – REINFORCED CONCRETE PRECAST INLET, (TYPE "C-1"), 10' OPENING, COMPLETE IN PLACE	EA	3	\$2,516.00	\$7,548.00	\$3,162.55	\$9,487.65	\$2,800.00	\$8,400.00
11	4" REINFORCED CONCRETE SLOPE PAVING, INCLUDES 2 FOOT TOE WALL ON ALL SIDES, COMPLETE IN PLACE	SY	348	\$111.00	\$38,628.00	\$144.05	\$50,129.40	\$105.00	\$36,540.00
12	18" THICK RIP RAP GRADATION NO. 2, INCLUDES GEOTEXTILE FABRIC OF MIRAFI-600 OR APPROVED EQUAL, COMPLETE IN PLACE	SY	214	\$115.00	\$24,610.00	\$119.00	\$25,466.00	\$100.00	\$21,400.00
13	INSTALLATION OF GREEN ARMOR 7010 ON OUTFALL SWALE, AS SHOWN ON PLAN & PROFILES, INCLUDES STRIPPING AREA OF WEEDS AND VEGETATION, COMPLETE IN PLACE	SY	1036	\$29.00	\$30,044.00	\$25.05	\$25,951.80	\$40.00	\$41,440.00
14	EXCAVATION OF 5' FLAT BOTTOM SWALES WITH 4:1 SIDE SLOPES WITH VARYING DEPTH, INCLUDES STRIPPINGS, STOCKPILE OF STRIPPINGS, REAPPLYING OF STRIPPINGS TO FINAL GRADED AREAS, INCLUDES HAULING AND COMPACTING TO 95% PROCTOR DENSITY OF SPOILS ON-SITE TO FINAL GRADED AREA, COMPLETE IN PLACE	LF	291	\$3.00	\$873.00	\$25.05	\$7,289.55	\$10.00	\$2,910.00
15	36" FLAP GATE, COMPLETE IN PLACE	EA	2	\$5,866.00	\$11,732.00	\$8,767.45	\$17,534.90	\$8,000.00	\$16,000.00



**BID TABULATION FOR:**

CONSTRUCTION OF WATER, SANITARY SEWER AND DRAINAGE FACILITIES & PAVING AND APPURTENANCES  
 TO SERVE HARVEST GREEN SECTION 54  
 FORT BEND COUNTY MUNICIPAL UTILITY DISTRICT NO. 134F  
 FORT BEND COUNTY, TEXAS  
 JUNE 11, 2024  
 LJA ENGINEERING, INC.  
 E. MURPHY  
 JUNE 11, 2024  
 2659-2154, 2659-2154C (9.2)

**BID OPENING DATE:**  
**BID OPENING LOCATION:**  
**TABULATION BY:**  
**TABULATION DATE:**  
**LJA JOB NO.**

ITEM	DESCRIPTION	UNIT	QTY	4) PRINCIPAL SERVICES, LTD		5) FELLERS AND CLARK LP		6) DIMAS BROS. CONSTRUCTION	
				UNIT COST	TOTAL COST	UNIT COST	TOTAL COST	UNIT COST	TOTAL COST
16	48" FLAP GATE, COMPLETE IN PLACE	EA	1	\$9,369.00	\$9,369.00	\$13,464.25	\$13,464.25	\$16,000.00	\$16,000.00
17	TRENCH SAFETY SYSTEM, ALL DEPTHS, ALL SIZES, COMPLETE IN PLACE	LF	2196	\$0.10	\$219.60	\$0.15	\$329.40	\$1.00	\$2,196.00
<b>DRAINAGE FACILITIES ITEMS – HARVEST GREEN SECTION 54 SUBTOTAL:</b>					<b>\$503,176.60</b>		<b>\$525,997.95</b>		<b>\$504,070.00</b>
<b>MISCELLANEOUS ITEMS – HARVEST GREEN SECTION 54</b>									
1	CEMENT STABILIZED SAND, 1.5 SACKS OF CEMENT PER CUBIC YARD OF MIX, (TO BE USED ONLY AT THE WRITTEN DIRECTION OF THE ENGINEER), ALL DEPTHS, COMPLETE IN PLACE	TON	1	\$27.00	\$27.00	\$50.00	\$50.00	\$30.00	\$30.00
2	ADDITIONAL DUCTILE IRON FITTINGS, (TO BE USED ONLY AT THE WRITTEN DIRECTION OF THE ENGINEER), COMPLETE IN PLACE	TON	2	\$100.00	\$200.00	\$100.00	\$200.00	\$500.00	\$1,000.00
3	STAGE I INLET PROTECTION BARRIERS, COMPLETE IN PLACE	EA	19	\$1.00	\$19.00	\$12.50	\$237.50	\$25.00	\$475.00
4	STAGE II INLET PROTECTION BARRIERS AS DIRECTED BY ENGINEER, COMPLETE IN PLACE	EA	21	\$50.00	\$1,050.00	\$12.50	\$262.50	\$25.00	\$525.00
5	CONSTRUCT AND MAINTAIN STABILIZED CONSTRUCTION EXIT, COMPLETE IN PLACE	EA	1	\$2,000.00	\$2,000.00	\$1,565.60	\$1,565.60	\$1,000.00	\$1,000.00
6	UTILITY SPOILS FROM SECTION 54 TO BE USED ON-SITE, INCLUDES HAULING, PLACEMENT AND COMPACTION TO 95% STANDARD PROCTOR DENSITY, COMPLETE IN PLACE	LS	1	\$3,085.00	\$3,085.00	\$13,960.41	\$13,960.41	\$15,000.00	\$15,000.00
7	ADDITIONAL COST TO HAUL UTILITY SPOILS FROM SECTION 54 OFF-SITE BUT WITHIN DEVELOPMENT, NO MORE THAN 3,500 FT (TO BE USED ONLY AT THE WRITTEN DIRECTION OF THE ENGINEER), INCLUDES STRIPPING, STOCK PILING OF STRIPPINGS, EMBANKMENT, AND REAPPLYING OF STRIPPINGS TO FINAL GRADED AREA, COMPLETE IN PLACE	CY	1000	\$5.00	\$5,000.00	\$12.50	\$12,500.00	\$3.00	\$3,000.00
8	SURFACE WATER CONTROL, INCLUDES PUMPING REQUIRED TO CONSTRUCT PROPOSED PROJECT, (TO BE USED ONLY AT THE WRITTEN DIRECTION OF THE ENGINEER), COMPLETE IN PLACE	LS	1	\$2,500.00	\$2,500.00	\$1,878.75	\$1,878.75	\$100.00	\$100.00
9	DEWATERING INCLUDES CONVENTIONAL VACUUM TYPE WELL POINTS, INTERNAL SUMPS AND PUMPS, OR ANY TYPE OF PUMPING AS NECESSARY TO COMPLETE THE CONSTRUCTION OF THE PROJECT, (TO BE USED ONLY AT THE WRITTEN DIRECTION OF THE ENGINEER), COMPLETE IN PLACE	LF	1972	\$20.00	\$39,440.00	\$20.00	\$39,440.00	\$20.00	\$39,440.00
10	ADDITIONAL COST FOR BEDDING AND BACKFILL FOR UNSATISFACTORY SOIL CONDITIONS (WET SAND), (TO BE USED ONLY AT THE WRITTEN DIRECTION OF THE ENGINEER), COMPLETE IN PLACE	LF	1972	\$20.00	\$39,440.00	\$20.00	\$39,440.00	\$20.00	\$39,440.00
11	FORT BEND COUNTY ONE-YEAR SUBDIVISION BOND FOR HARVEST GREEN SECTION 54 IN THE TOTAL AMOUNT OF THE BOND OF \$164,864.00, COMPLETE IN PLACE	LS	1	\$1,000.00	\$1,000.00	\$4,383.70	\$4,383.70	\$5,000.00	\$5,000.00
12	CONSTRUCTION STAKING FOR HARVEST GREEN SECTION 54 FOR WS&D CONSTRUCTION BY THE CONTRACTOR PER KYLE KACAL, GBI SURVEYING, CONTACT 281-499-4539 FOR PRICING, COMPLETE IN PLACE	LS	1	\$9,720.00	\$9,720.00	\$9,720.00	\$9,720.00	\$9,720.00	\$9,720.00
13	CONCRETE TRUCK WASHOUT, COMPLETE IN PLACE	EA	1	\$2,000.00	\$2,000.00	\$125.25	\$125.25	\$500.00	\$500.00
<b>MISCELLANEOUS ITEMS – HARVEST GREEN SECTION 54 SUBTOTAL:</b>					<b>\$105,481.00</b>		<b>\$123,763.71</b>		<b>\$115,230.00</b>
<b>ALTERNATE ITEMS #1</b>									
1	6-INCH REINFORCED CONCRETE PAVEMENT (3,500 PSI / 5.5 SACK CEMENT PER CUBIC YARD), COMPLETE IN PLACE	SY	8089	\$66.50	\$537,918.50	\$58.94	\$476,765.66	\$65.00	\$525,785.00
2	4-INCH X 12-INCH REINFORCED CONCRETE CURB (3,500 PSI), COMPLETE IN PLACE	LF	3453	\$4.00	\$13,812.00	\$4.10	\$14,157.30	\$4.00	\$13,812.00

**BID TABULATION FOR:**

CONSTRUCTION OF WATER, SANITARY SEWER AND DRAINAGE FACILITIES & PAVING AND APPURTENANCES  
 TO SERVE HARVEST GREEN SECTION 54  
 FORT BEND COUNTY MUNICIPAL UTILITY DISTRICT NO. 134F  
 FORT BEND COUNTY, TEXAS  
 JUNE 11, 2024  
 LJA ENGINEERING, INC.  
 E. MURPHY  
 JUNE 11, 2024  
 2659-2154, 2659-2154C (9.2)

**BID OPENING DATE:**  
**BID OPENING LOCATION:**  
**TABULATION BY:**  
**TABULATION DATE:**  
**LJA JOB NO.**

ITEM	DESCRIPTION	UNIT	QTY	4) PRINCIPAL SERVICES, LTD		5) FELLERS AND CLARK LP		6) DIMAS BROS. CONSTRUCTION	
				UNIT COST	TOTAL COST	UNIT COST	TOTAL COST	UNIT COST	TOTAL COST
3	6-INCH REINFORCED CONCRETE CURB (3,500 PSI), COMPLETE IN PLACE	LF	1443	\$4.00	\$5,772.00	\$4.10	\$5,916.30	\$4.00	\$5,772.00
4	8-INCH LIME STABILIZED SUBGRADE FOR 6-INCH PAVEMENT (MANIPULATION), COMPLETE IN PLACE	SY	9173	\$5.00	\$45,865.00	\$6.15	\$56,413.95	\$7.00	\$64,211.00
5	3% HYDRATED LIME FOR SUBGRADE, (BY DRY UNIT WEIGHT) AS REQUIRED BY SOIL CONDITIONS AND APPROVED BY GEOTECHNICAL ENGINEER, COMPLETE IN PLACE	TON	91	\$350.00	\$31,850.00	\$333.13	\$30,314.83	\$384.00	\$34,944.00
6	7% FLY ASH FOR SUBGRADE, (BY DRY UNIT WEIGHT) AS REQUIRED BY SOIL CONDITIONS AND APPROVED BY GEOTECHNICAL ENGINEER, COMPLETE IN PLACE	TON	212	\$140.00	\$29,680.00	\$266.50	\$56,498.00	\$155.00	\$32,860.00
7	FINAL LOT AND RESERVE GRADING, COMPLETE IN PLACE	LS	1	\$10,000.00	\$10,000.00	\$11,771.66	\$11,771.66	\$15,000.00	\$15,000.00
8	ROADWAY, LOT AND RESERVE EMBANKMENT INCLUDES STRIPPINGS, STOCKPILING OF STRIPPINGS, COMPACTION TO 95% STANDARD PROCTOR DENSITY, RE-APPLICATION OF STRIPPINGS, COMPLETE IN PLACE	CY	3710	\$4.00	\$14,840.00	\$5.15	\$19,106.50	\$4.00	\$14,840.00
9	ROADWAY, LOT AND RESERVE EXCAVATION, INCLUDES STRIPPINGS, STOCKPILING OF STRIPPINGS, AND RE-APPLICATION OF STRIPPINGS, TO APPLICABLE AREAS, COMPLETE IN PLACE	CY	3710	\$4.00	\$14,840.00	\$5.15	\$19,106.50	\$4.00	\$14,840.00
10	TYPE 7 ADA RAMPS, COMPLETE IN PLACE	EA	8	\$1,750.00	\$14,000.00	\$1,537.50	\$12,300.00	\$1,700.00	\$13,600.00
11	PERMANENT TRAFFIC CONTROL DEVICES, (INCLUDING ALL TRAFFIC BUTTONS, PERMANENT STRIPING AND PERMANENT SIGNAGE), COMPLETE IN PLACE	LS	1	\$5,000.00	\$5,000.00	\$5,125.00	\$5,125.00	\$5,000.00	\$5,000.00
12	TEMPORARY TRAFFIC CONTROL DEVICES (INCLUDING ALL TRAFFIC BUTTONS, PAVEMENT STRIPING, STREET SIGNS, AND TRAFFIC SIGNS), COMPLETE IN PLACE	LS	1	\$5,000.00	\$5,000.00	\$1,025.00	\$1,025.00	\$1,000.00	\$1,000.00
13	DOUBLE REFLECTORIZED BLUE BUTTONS FOR FIRE HYDRANTS, COMPLETE IN PLACE	EA	5	\$10.00	\$50.00	\$10.25	\$51.25	\$20.00	\$100.00
14	6-INCH SCHEDULED 40 PVC IRRIGATION SLEEVES (HORIZONTAL SLEEVE ONLY), NO SEPARATE PAY FOR VERTICAL SLEEVE, COMPLETE IN PLACE	LF	87	\$25.00	\$2,175.00	\$41.00	\$3,567.00	\$38.00	\$3,306.00
15	REMOVAL AND DISPOSAL OF TYPE III BARRICADE WITH LOAD TRANSFER DEVICE, COMPLETE IN PLACE	EA	1	\$50.00	\$50.00	\$1.05	\$1.05	\$1.00	\$1.00
16	CONNECTION TO EXISTING 6-INCH CONCRETE PAVEMENT, COMPLETE IN PLACE	EA	1	\$1,500.00	\$1,500.00	\$512.50	\$512.50	\$1,500.00	\$1,500.00
17	REMOVE AND REPLACE EXISTING TYPE 7 ADA RAMP, COMPLETE IN PLACE	EA	1	\$2,600.00	\$2,600.00	\$2,562.50	\$2,562.50	\$2,000.00	\$2,000.00
18	STORM WATER POLLUTION PREVENTION PLAN COMPLIANCE AND INSPECTIONS, INCLUDING STREET SWEEPING, COMPLETE IN PLACE	LS	1	\$5,000.00	\$5,000.00	\$1,530.00	\$1,530.00	\$500.00	\$500.00
19	CONCRETE TRUCK WASHOUT, COMPLETE IN PLACE	EA	1	\$2,500.00	\$2,500.00	\$1,530.00	\$1,530.00	\$1,000.00	\$1,000.00
20	REINFORCED FILTER FABRIC FENCE, COMPLETE IN PLACE	LF	100	\$2.00	\$200.00	\$5.00	\$500.00	\$2.00	\$200.00
21	HYDROMULCH SEEDING OF SWALES, INCLUDES WATERING, COMPLETE IN PLACE	AC	3	\$1,500.00	\$4,500.00	\$2,560.00	\$7,680.00	\$2,800.00	\$8,400.00
22	BROADCAST SEEDING OF LOTS AND RESERVES IN SECTION 54, INCLUDES WATERING AND FERTILIZING, COMPLETE IN PLACE	AC	14	\$900.00	\$12,600.00	\$2,050.00	\$28,700.00	\$600.00	\$8,400.00
23	HAUL FROM ON-SITE STOCKPILE AND EMBANKMENT OF LOTS WITHIN SECTION 54, INCLUDES ON-SITE HAULING, EMBANKMENT, COMPACTION TO 95% STANDARD PROCTOR DENSITY, COMPLETE IN PLACE	CY	6500	\$8.15	\$52,975.00	\$5.15	\$33,475.00	\$7.00	\$45,500.00

**BID TABULATION FOR:**

CONSTRUCTION OF WATER, SANITARY SEWER AND DRAINAGE FACILITIES & PAVING AND APPURTENANCES  
 TO SERVE HARVEST GREEN SECTION 54  
 FORT BEND COUNTY MUNICIPAL UTILITY DISTRICT NO. 134F  
 FORT BEND COUNTY, TEXAS  
 JUNE 11, 2024  
 LJA ENGINEERING, INC.  
 E. MURPHY  
 JUNE 11, 2024  
 2659-2154, 2659-2154C (9.2)

**BID OPENING DATE:**  
**BID OPENING LOCATION:**  
**TABULATION BY:**  
**TABULATION DATE:**  
**LJA JOB NO.**

ITEM	DESCRIPTION	UNIT	QTY	4) PRINCIPAL SERVICES, LTD		5) FELLERS AND CLARK LP		6) DIMAS BROS. CONSTRUCTION	
				UNIT COST	TOTAL COST	UNIT COST	TOTAL COST	UNIT COST	TOTAL COST
24	CONSTRUCTION STAKING FOR HARVEST GREEN SECTION 54 FOR PAVING CONSTRUCTION BY THE CONTRACTOR PER KYLE KACAL, GBI SURVEYING, CONTACT 281-499-4539 FOR PRICING, COMPLETE IN PLACE	LS	1	\$3,890.00	\$3,890.00	\$3,890.00	\$3,890.00	\$3,890.00	\$3,890.00
<b>ALTERNATE ITEMS #1 SUBTOTAL:</b>					<b>\$816,617.50</b>		<b>\$792,500.00</b>		<b>\$816,461.00</b>
<b><u>BIDDING SUMMARY</u></b>									
SUBTOTAL WATER ITEMS – HARVEST GREEN SECTION 54					\$225,428.50		\$217,715.55		\$243,536.00
SUBTOTAL SANITARY SEWER ITEMS – HARVEST GREEN SECTION 54					\$213,672.62		\$185,522.79		\$245,841.80
SUBTOTAL DRAINAGE FACILITIES ITEMS – HARVEST GREEN SECTION 54					\$503,176.60		\$525,997.95		\$504,070.00
SUBTOTAL MISCELLANEOUS ITEMS – HARVEST GREEN SECTION 54					\$105,481.00		\$123,763.71		\$115,230.00
<b>TOTAL AMOUNT BASE BID</b>					<b>\$1,047,758.72</b>		<b>\$1,053,000.00</b>		<b>\$1,108,677.80</b>
<b><u>ALTERNATE ITEMS #1</u></b>									
TOTAL AMOUNT BASE BID					\$1,047,758.72		\$1,053,000.00		\$1,108,677.80
SUBTOTAL ALTERNATE ITEMS #1					\$816,617.50		\$792,500.00		\$816,461.00
<b>TOTAL AMOUNT INCLUDING ALTERNATE ITEMS #1</b>					<b>\$1,864,376.22</b>		<b>\$1,845,500.00</b>		<b>\$1,925,138.80</b>

